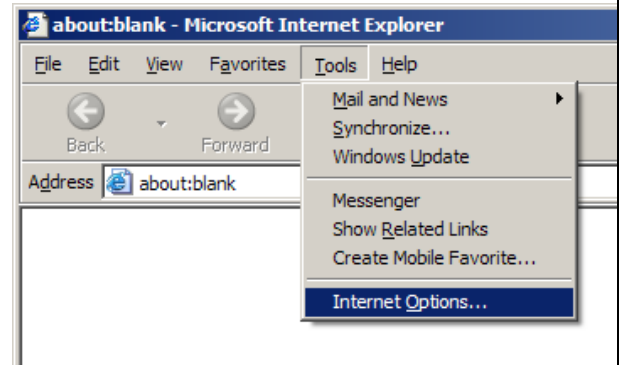


# Modifying Internet Explorer Privacy Settings

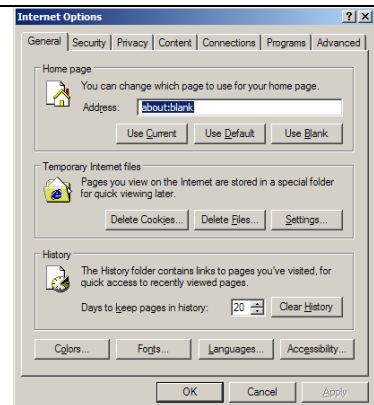
1

From within Internet Explorer, click **Tools**, then click **Internet Options**.



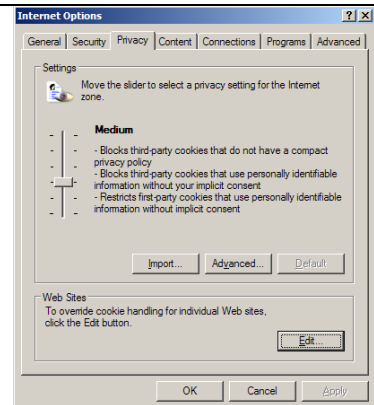
2

When presented with the following screen select the **Privacy** tab.



3

When presented with the following screen click **Edit**.



4

When presented with the following screen enter the address **http://213.171.200.148** in the box labelled **Address of Web site** then click **Allow**.

Click **OK** and then **OK** to complete the process.

