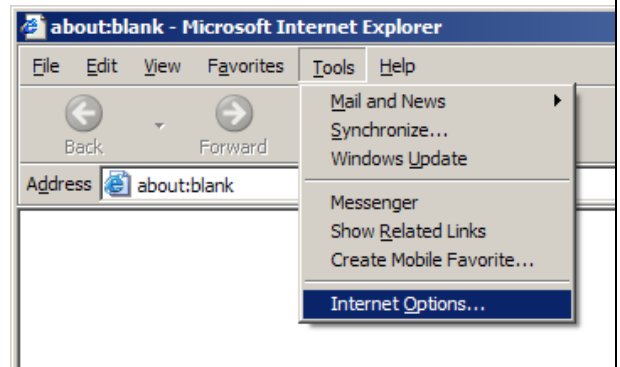


Modifying Internet Explorer Security Settings

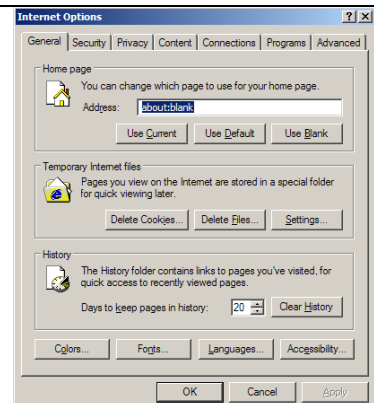
1

From within Internet Explorer, click **Tools**, then click **Internet Options**.



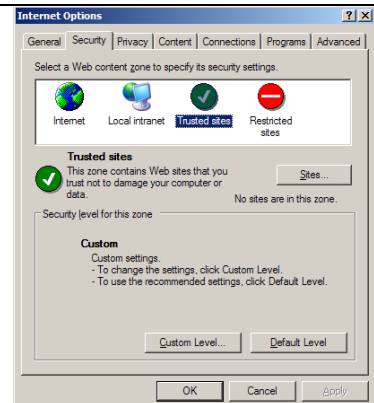
2

When presented with the following screen select the **Security** tab.



3

When presented with the following screen select **Trusted Sites** then click **Sites**.



4

When presented with the following screen enter the address **http://213.171.200.148** in the box labelled **Add this Web site to the zone** then click **Add**.

Ensure that the **Require server verification (https:) for all sites in this zone** is **not** selected. Click **OK** and then **OK** to complete the process.

